



**Varda D. Sarnat**

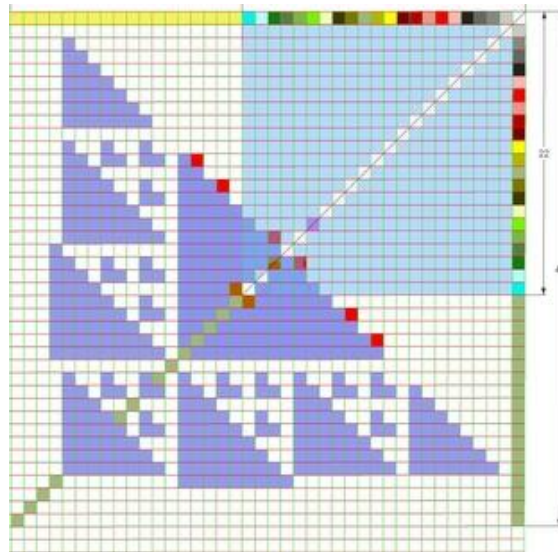
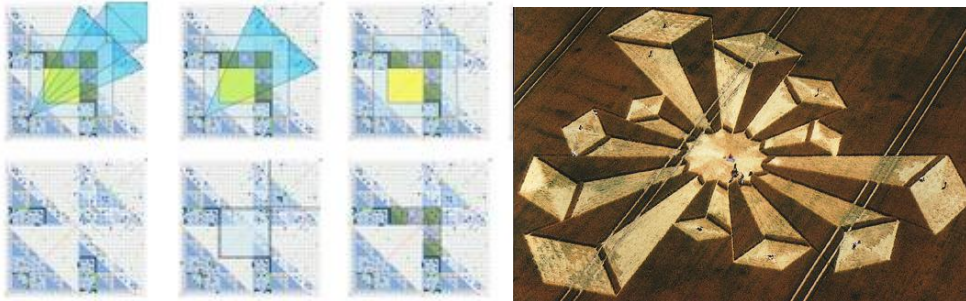
[sarnat@zahav.net.il](mailto:sarnat@zahav.net.il)

**The Natural Matrix of the Crop Circles.**

Perhaps crop circles are made by god, higher mind, or premeditated by intelligence with powers beyond our grasp,

But, I hope to explain, how Mathematics, Algebra, naturally illustrates into pictograms of organic geometry.

both languages might share the same source, both present "mind over matter", peace and wisdom.



Recently I found this matrix, I named "The **SHABATICAL** tablets" in the house of Aleph, since Shabbat (numerical value 702) is the main theme in the tablets.

A linguistic arc of covenant starts with Aleph, the **first** Hebrew letter, numerical value = 1, but the **name** Aleph =111

The last 22<sup>nd</sup> letter is Tav. (Plus there are 5 final letters, 22 + 5 = 27 letters all in all)

The word "Shabbat" appears many times in the tablets (always painted in yellow) and seems to ascend through the numbers. Hebrew, the language of Nature, is found to be true mathematically, numerically, geometrically, and it makes sense. Please follow the 22 numbers, 1 - 22 as seen in first column, on the right side of the tablet below:

																								1	
	22	21	20	19	18	17	16	15	14	13	12	11	10	9	8	7	6	5	4	3	2	1			
	253	231	210	190	171	153	136	120	105	91	78	66	55	45	36	28	21	15	10	6	3				
	26	772	541	331	141	969	816	680	560	455	364	286	220	165	120	84	56	35	20	10	4				
	662	636	863	322	990	849	879	63	382	821	366	2	715	495	330	210	126	70	35	15	5				
	845	183	546	682	360	369	519	639	576	194	372	6	4	288	792	462	252	126	56	21	6				
	306	460	277	730	48	687	318	798	159	582	388	16	10	6	717	924	462	210	84	28	7				
	225	918	458	181	450	402	714	396	597	438	855	467	451	441	435	717	792	330	120	36	8				
	441	216	297	838	657	207	804	90	693	96	657	801	334	882	441	6	288	495	165	45	9				
	471	30	813	516	677	20	812	8	917	224	128	470	668	334	451	10	4	715	220	55	10				
	561	90	60	246	729	52	32	219	211	293	69	940	470	801	467	16	6	2	286	66	11				
	633	72	981	921	675	945	893	861	642	431	138	69	128	657	855	388	372	366	364	78	12				
	492	858	786	804	882	207	261	367	505	862	431	293	224	96	438	582	194	821	455	91	13				
	672	180	321	534	729	846	639	378	11	505	642	211	917	693	597	159	576	382	560	105	14				
	681	9	828	507	972	243	396	756	378	367	861	219	8	90	396	798	639	63	680	120	15				
	36	354	345	516	9	36	792	396	639	261	893	32	812	804	714	318	519	879	816	136	16				
	333	297	942	597	81	72	36	243	846	207	945	52	20	207	402	687	369	849	969	153	17				
	333	999	702	759	162	81	9	972	729	882	675	729	677	657	450	48	360	990	141	171	18				
	555	222	222	519	759	597	516	507	534	804	921	246	516	838	181	730	682	322	331	190	19				
	222	666	444	222	702	942	345	828	321	786	981	60	813	297	458	277	546	863	541	210	20				
	555	333	666	222	999	297	354	9	180	858	72	90	30	216	918	460	183	636	772	231	21				
	111	555	222	555	333	333	36	681	672	492	633	561	471	441	225	306	845	662	26	253	22				

The mathematical rule, here, is that each new column (added on the left side of any column) contains the sums of the previous numbers descending from the previous column (on its right). See the results of the next column from top down (or see the next line, from right to left) as seen in the tablet above:

1, 1+2=**3** 1+2+3=**6** 1+2+3+4=**10** 1+2+3+4+5=**15** ... **21, 28, 36**....ending **253**

22 main Hebrew letters sum up to - 253, in Hebrew Gimatria the word means "Nivera" = 253 - "created"

According to Jewish bible, the Hebrew letters were the first to be created. And the world was then created by them, by speech. God said and it was done, created...this is proved here, with 22 numbers sum 253 "created". Also notice, the 22<sup>nd</sup> column ends with 111= ALEPH. Meaning that 22 additions sum again in one, in Aleph = 111, the first letter, so it all started from ONE and it all ends with ONE (Aleph =first= 1= 111)

Keep in mind that I am using the principle of Gimatria which puts thousands back into ones,

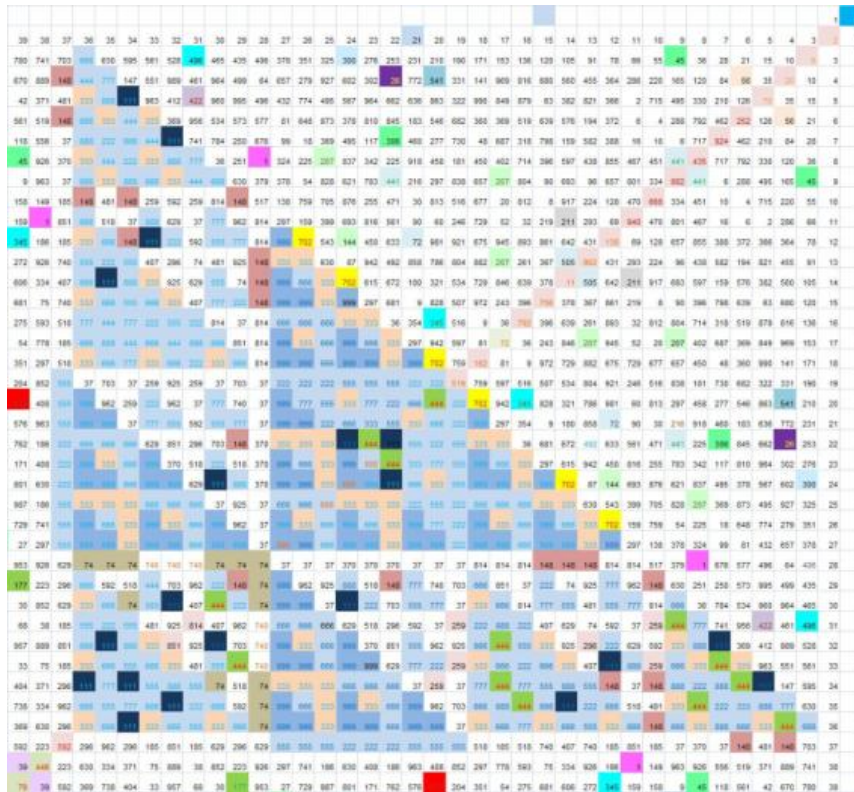
See how the third column sums 26 = YEHOVA, also notice in the tablets words like "ISRAEL" 541, "Moshe" = 345, "**Shabbat**"(in Yellow) =**702**, Adam=45, light OR =207, truth EMET= 441, Aleph=111 etc.

While Moses went up the mountain for 40 days, each day he learned something new. Imagine him as a child in a little box or a cradle by the water, as the story goes, see the value 345 = Moshe, by a bunch of numbers (at the bottom left side of the tablet) creating a unique area of triple numbers (bluish), see close up above, Moshe 345 is watching SHABAT 702 sitting like a queen on the chair, or climbing a mountain, ISRAEL 541 next to Jehovah 26, truth EMET 441, Mercy "Chased" 72, light "Or" 207, and there's more

If we calculate even farther, up to 40 (for example), the numbers in the tablet will form structures, as seen bellow:

All (triple number) numbers, such as: 222, 444, 555, 666, 777, 888, 999, are in shades of bluish (333 in cream)

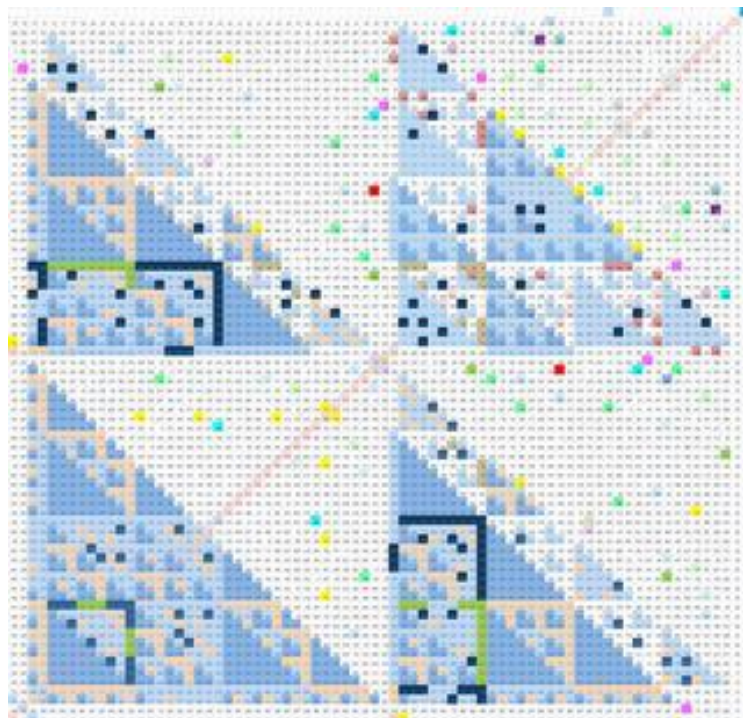
Already one can see the source of the Menorah (six candles of 'Shabbat' plus a central one pointing toward ONE)



The (reddish) diagonal is made of unique numbers, they divide the tablet into two halves where by all numbers on the right side match the numbers on the top, and all the numbers from the left side match the numbers at the bottom

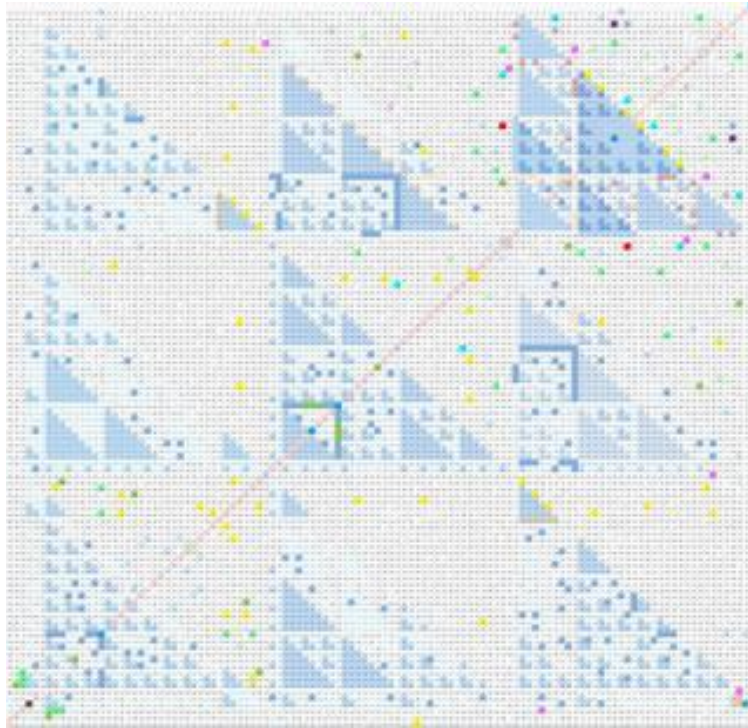
This illustrate "the parting of the sea", and the withdraw of water into two sides, forming a path of "dry land" within the sea, to walk about while crossing this ocean of words and numbers....Along the path, we see "Aleph" 5 more times before we even finish 111 column (in order to comply with the requirement of Aleph = 111)....but computers can help

bellows: Up to 75 columns, "COHEN"



A complete picture of Aleph (111 columns,): the name of the letter

Aleph is found 5 more times, along the way, and the 5th at the cross point of 100 by 100



Shabat, shalom and few Temple devices are depicted here (the world of formation)



The geometrical formations, below, also resemble UFO arrangements. See u tube ...

